

## HONING TOOLS

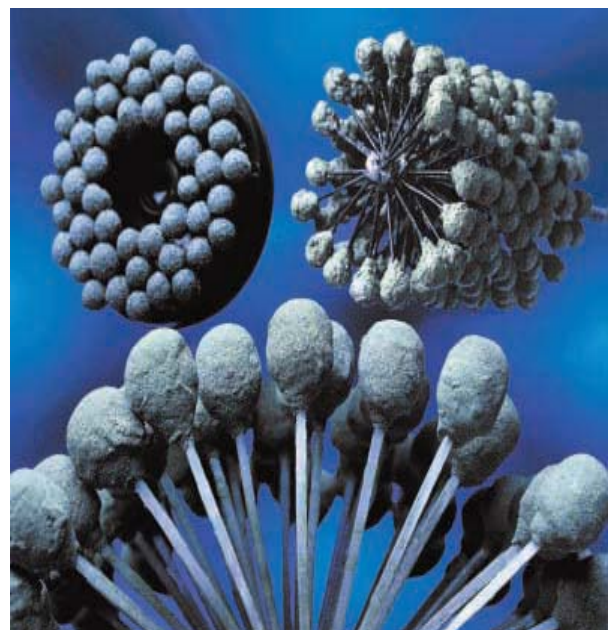
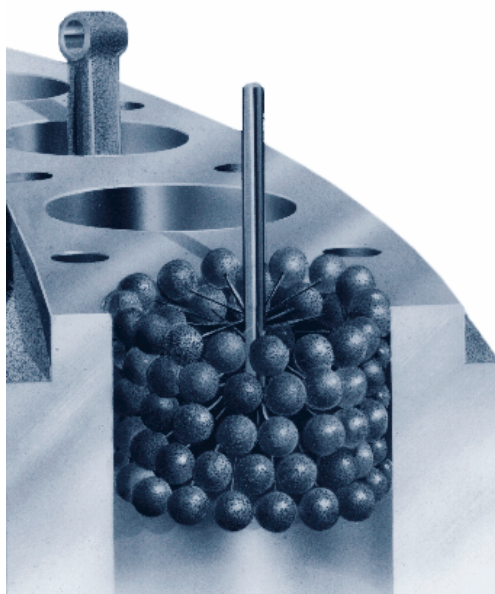
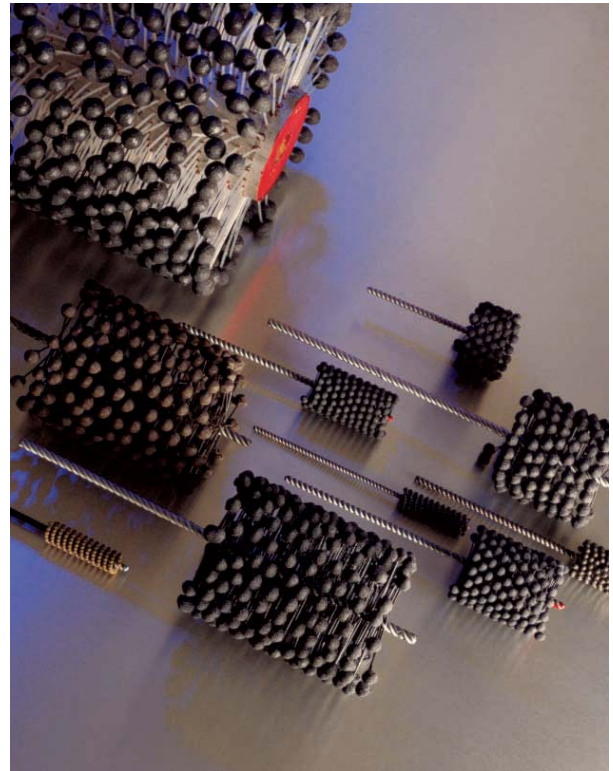
### For Marine Engine Cylinder, Hydraulic Cylinder, Boiler Tube and any type and size of Cylinder.

The Honing Process (Super finishing) produces a controlled surface condition unobtainable by any other method. It involves finish, geometry and metallurgical structure; a high percentage plateau free of cut, torn and folded metal (with radiused ports).

A resilient, flexible, honing tool with a soft cutting action. The abrasive (points) globules each have independent suspension that assures the Honing Tool to be self-centering, self aligning to the bore, and self-compensating for wear.

Specifically, it is a low-temperature abrading process that exposes the undisturbed base metal structure to produce a long wearing surface. It is a method of developing a surface on a metal part which is optically smooth and metallurgically free of any fragmented, amorphous or smeared metal from previous operations. It is accomplished at a low pressure where the "stones" float.

The particular type of Honing crosshatch is extremely efficient in providing a multiplicity of oil grooves or valleys for oil retention as opposed to the often unidirectional or uneven valleys common to the conventional type rigid hone. A crosshatch that usually remains as the cylinder wall has been wear-reduced by the Honing process.



## HONING TOOLS

Catalog Number	Diameter	For Bore Sizes	Overall Length
GBD 3"	76mm	3" to 2-3/4"	13-1/2"
GBD 3-1/4"	83mm	3-1/4" to 3"	13-1/2"
GBD 3-1/2"	89mm	3-1/2" to 3"	13-1/2"
GBD 3-3/4"	95mm	3-3/4" to 3-1/4"	13-1/2"
GBD 4"	101mm	4" to 3-1/2"	13-1/2"
GBD 4-1/4"	108mm	4-1/4" to 3-3/4"	13-1/2"
GBD 4-1/2"	114 mm	4-1/2" to 4"	13-1/2"
GBD 5"	127 mm	5" to 4-1/2"	17-1/2"
GBD 5-1/2"	140 mm	5-1/2" to 5"	17-1/2"
GBD 6"	152mm	6" to 5-1/2"	17-1/2"
GBD 6-1/2"	165mm	6-1/2" to 6"	17-1/2"
GBD 7"	178 mm	7" to 6-1/2"	17-1/2"
GBD 7-1/2"	190mm	7-1/2" to 7"	17-1/2"
GBD 8"	203mm	8" to 7-1/2"	17-1/2"



Catalog Number	Diameter	For Bore Sizes	Overall Length
<b>3" Core (1/2" Hex Shaft)</b>			
GBDH 8"	203mm	8" to 7-1/2"	34"
GBD 8 1/2"	216 mm	8-1/2" to 8"	34"
GBD 9"	228 mm	9" to 8-1/2"	34"
GBD 9 1/2"	241 mm	9-1/2" to 9"	34"
GBD 10"	254 mm	10" to 9-1/2"	34"
<b>4" Core (1/2" Hex Shaft)</b>			
GBD 10 1/2"	267 mm	10-1/2" to 10"	34"
GBD 11"	280 mm	11" to 10-1/2"	34"
GBD 11 1/2"	292 mm	11-1/2" to 11"	34"
GBD 12"	305 mm	12" to 11-1/2"	34"
<b>5" Core (5/8" Hex Shaft)</b>			
GBD 12 1/2"	318 mm	12-1/2" to 12"	34"
GBD 13"	330 mm	13" to 12-1/2"	34"
GBD 13 1/2"	344 mm	13-1/2" to 13"	34"
GBD 14"	355 mm	14" to 13-1/2"	34"
<b>6" Core (5/8" Hex Shaft)</b>			
GBD 15"	381 mm	15" to 14"	34"
GBD 16"	406 mm	16" to 15"	34"
<b>8" Core (5/8" Hex Shaft)</b>			
GBD 17"	432 mm	17" to 16"	34"
GBD 18"	457 mm	18" to 17"	34"

